

TEST CONDITIONS

Test Date	2/8/2020
Test Conductor	jhimmelspach
Boat Weight as Tested (lbs)	10550
Air Temperature (degrees F)	65
Elevation (ft)	62
Sea State	Choppy
Wind Velocity range (mph)	10-12
Fresh/Salt Water	Freshwater
Fuel Level at Testing (gal)	50

ENGINE SPECIFICATIONS

Number of Engines	2
Engine	L6SC Verado
Horsepower	400
Cylinders	6
Drive or gear model and ratio	HD Camber 1.75
Mounting Bolt Hole	3,3
Engine Height (in)	2.3,2.3
Engine Setback (in)	32.5,32.5
Engine Length (in)	25,25

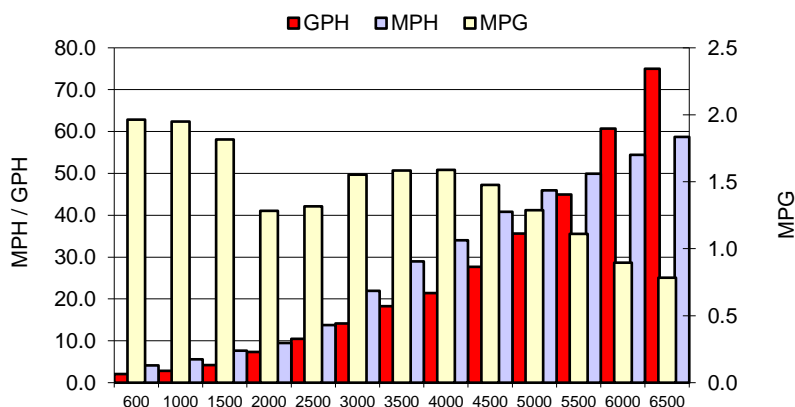
PERFORMANCE SUMMARY

Top Speed (mph @ rpm)	60.0	6700
Acceleration 0 - 20 mph (seconds)	4.9	
Acceleration 0 - 30 mph (seconds)	7.7	

PROPELLER SPECIFICATIONS

Mercury Name	Revolution 4
Material	Stainless Steel
Pitch	19.0,19.0
Number of Blades	4

PERFORMANCE CURVE



BOAT SPECIFICATIONS

Region/s sold	World
Manufacturer	Crevalle
Website	crevalleboats.com
Boat Model	33 CSF
Boat Type	Offshore Saltwater Fish
Material	Fiberglass
Length (ft)	33.2
Beam (ft)	10.5
Max hp Capacity	900
Fuel Tank Capacity (gal)	300
Steering Type	Joystick
Dry Boat Weight (lbs)	8000

PERFORMANCE DATA

RPM	SPEED	FUEL CONSUMPTION	FUEL CONSUMPTION	RANGE
RANGE	MPH	GPH	MPG	MILES
600	4.1	2.1	2.0	589
1000	5.6	2.9	1.9	585
1500	7.6	4.2	1.8	544
2000	9.4	7.4	1.3	385
2500	13.7	10.5	1.3	395
3000	21.9	14.1	1.6	466
3500	29.0	18.3	1.6	475
4000	34.0	21.4	1.6	476
4500	40.8	27.7	1.5	443
5000	45.9	35.6	1.3	387
5500	49.9	44.9	1.1	333
6000	54.4	60.7	0.9	269
6500	58.7	75.0	0.8	235
6700	60.0	76.7	0.8	235