



33 CSF

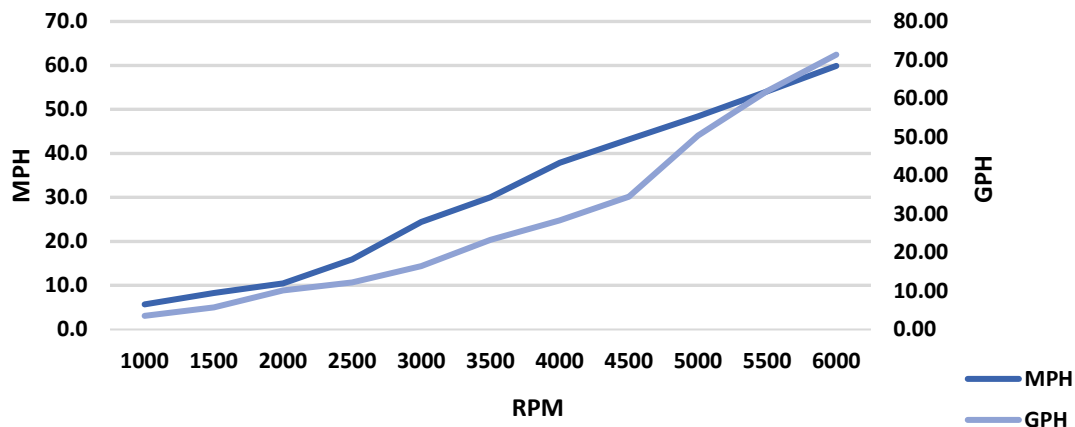
Powered By:



MERCURY

Twin 400V10

Performance Data



Conditions

Person(s)	2
Fuel on board	50 Gal
Temp	72 Deg
Wind	5 to 10
Prop	Rev X 23"
Fuel Capacity	300

Performance Data, Test date 03.17.23

RPM	MPH	GPH	MPG	RANGE
1000	5.7	3.54	1.6	386
1500	8.3	5.76	1.4	346
2000	10.5	10.14	1.0	249
2500	15.9	12.20	1.3	313
3000	24.4	16.44	1.5	356
3500	30.0	23.30	1.3	309
4000	37.9	28.38	1.3	321
4500	43.2	34.50	1.3	301
5000	48.4	50.36	1.0	231
5500	54.1	61.92	0.9	210
6000	59.9	71.38	0.8	201
6400	65.0	71.90	0.9	217

Time to Plane

1st Run	2nd Run	3rd Run	Average
3.9	3.9	3.7	3.8

0-20 MPH

1st Run	2nd Run	3rd Run	Average
3.8	3.9	3.7	3.8

0-30 MPH

1st Run	2nd Run	3rd Run	Average
6.2	5.9	5.8	6.0



Note: These numbers are intended to provide a likeness of the described boats performance. Crevalle Boats does not in any way guarantee that these exact numbers can be reproduced. Variations in boat weight, temperature, humidity, wind, fuel, operators ability and water are just some of the factors that affect a boats performance.

2023 Model Year

Crevalle Boats
1520 Industrial Drive
Wildwood, Florida 34785 (P)352-400-4222

33 CSF

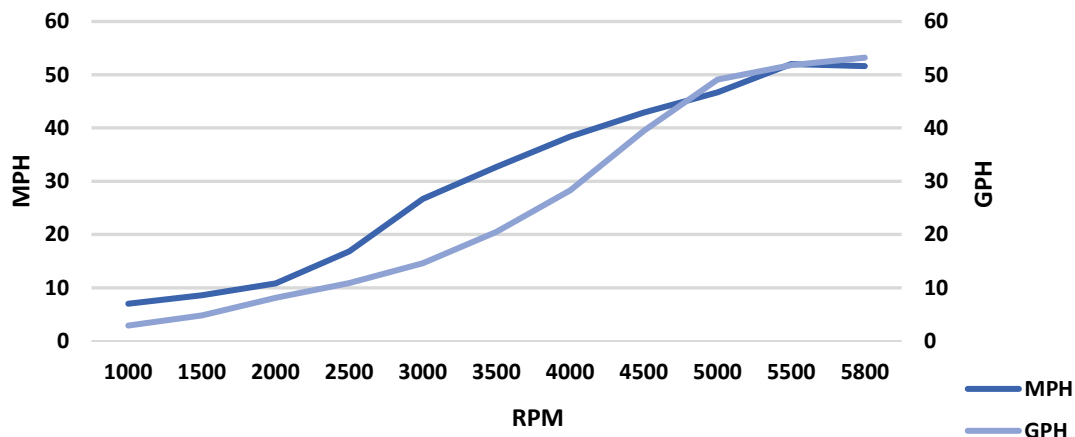


33 CSF

Powered By:



Performance Data



Conditions

Person(s)	2
Fuel on board	50 Gal
Top	Hard Top
Jack Plate	No
Temp	77 deg.
Wind	5 MPH
Prop	TP 19"
Fuel Capacity	300

Performance Data, Test date

RPM	MPH	GPH	MPG	RANGE
1000	7	2.9	2.4	579
1500	8.6	4.8	1.8	430
2000	10.8	8.1	1.3	320
2500	16.8	10.9	1.5	370
3000	26.7	14.6	1.8	439
3500	32.7	20.5	1.6	383
4000	38.4	28.3	1.4	326
4500	42.9	39.5	1.1	261
5000	46.7	49.1	1.0	228
5500	52	51.8	1.0	241
5800	51.6	53.2	1.0	233

Time to Plane			
1st Run	2nd Run	3rd Run	Average
5.9	6.1	5.5	5.8

0-20 MPH			
1st Run	2nd Run	3rd Run	Average
5.8	5.3	5.2	5.4

0-30 MPH			
1st Run	2nd Run	3rd Run	Average
8.6	9.0	8.6	8.7



Note: These numbers are intended to provide a likeness of the discribed boats performance. Crevalle Boats does not in any way guarantee that these exact numbers can be reproduced. Variations in boat weight, temperature, humidity, wind, fuel, operators ability and water are just some of the factors that affect a boats performance.

2022 Model Year

Crevalle Boats
1520 Industrial Drive
Wildwood, Florida 34785 (P)352-400-4222

33 CSF

TEST CONDITIONS

Test Date	2/8/2020
Test Conductor	jhimmelspach
Boat Weight as Tested (lbs)	10550
Air Temperature (degrees F)	65
Elevation (ft)	62
Sea State	Choppy
Wind Velocity range (mph)	10-12
Fresh/Salt Water	Freshwater
Fuel Level at Testing (gal)	50

ENGINE SPECIFICATIONS

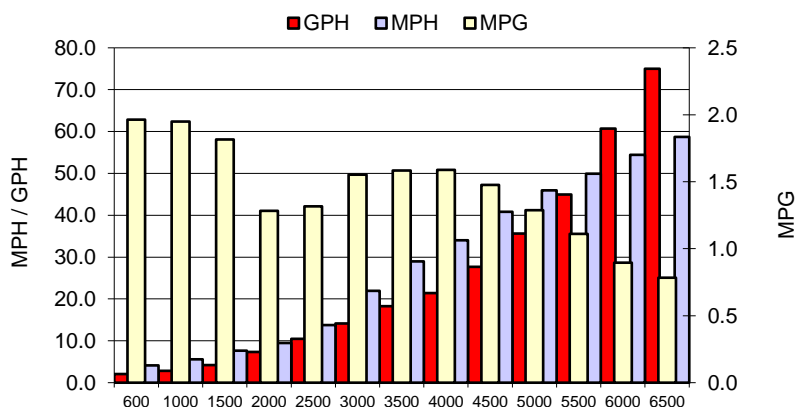
Number of Engines	2
Engine	L6SC Verado
Horsepower	400
Cylinders	6
Drive or gear model and ratio	HD Camber 1.75
Mounting Bolt Hole	3,3
Engine Height (in)	2.3,2.3
Engine Setback (in)	32.5,32.5
Engine Length (in)	25,25

PERFORMANCE SUMMARY

Top Speed (mph @ rpm)	60.0	6700
Acceleration 0 - 20 mph (seconds)	4.9	
Acceleration 0 - 30 mph (seconds)	7.7	

PROPELLER SPECIFICATIONS

Mercury Name	Revolution 4
Material	Stainless Steel
Pitch	19.0,19.0
Number of Blades	4

PERFORMANCE CURVE

BOAT SPECIFICATIONS

Region/s sold	World
Manufacturer	Crevalle
Website	crevalleboats.com
Boat Model	33 CSF
Boat Type	Offshore Saltwater Fish
Material	Fiberglass
Length (ft)	33.2
Beam (ft)	10.5
Max hp Capacity	900
Fuel Tank Capacity (gal)	300
Steering Type	Joystick
Dry Boat Weight (lbs)	8000

PERFORMANCE DATA

RPM	SPEED	FUEL CONSUMPTION	FUEL CONSUMPTION	RANGE
RANGE	MPH	GPH	MPG	MILES
600	4.1	2.1	2.0	589
1000	5.6	2.9	1.9	585
1500	7.6	4.2	1.8	544
2000	9.4	7.4	1.3	385
2500	13.7	10.5	1.3	395
3000	21.9	14.1	1.6	466
3500	29.0	18.3	1.6	475
4000	34.0	21.4	1.6	476
4500	40.8	27.7	1.5	443
5000	45.9	35.6	1.3	387
5500	49.9	44.9	1.1	333
6000	54.4	60.7	0.9	269
6500	58.7	75.0	0.8	235
6700	60.0	76.7	0.8	235